

SAFETY FOOTWEAR



& WORKWEAR

**Iron
Steel[®]**
SCANDINAVIA

Milano

#201489 520 g

Antistatic Removable
Cambrelle IP
Footbed including
Poron®

High Abrasion Resistant
Breathable Mesh

High
Rebound
Compound
Phylon
Midsole

Aluminium
Toe Cap

Non-metal
Anti-penetration

Dual Density
Light Weight Sole

EUR 37 - 47

EN ISO 20345:2011 S1P HRO SRC



Verona

#201606 564g

**Antistatic Removable
Cambrelle IP
Footbed including
Poron®**

**High Abrasion Resistant
Breathable Mesh**

**High
Rebound
Compound
Phylon
Midsole**

**Aluminium
Toe Cap**

**Non-metal
Anti-penetration**

**Dual Density
Light Weight Sole**

EUR 37 - 47

EN ISO 20345:2011 S1P HRO SRC

BOA®

**FIT TO GO
FURTHER.™**

poron^xrd extreme
impact
protector



BOA®

**FIT TO GO
FURTHER.™**

poron^xrd extreme
impact
protector



Boston

#201614 604g

Antistatic
Removable
Poron® XRD®
Footbed

Breathable Comfortable Upper

Non-metal
Anti-penetration

Lightweight
Sporty Injection
Phylon Midsole

Dual Density Outer Sole,
Flex-lines Facilitate Movement

Aluminium
Toe Cap



EUR 37 - 47

EN ISO 20345:2011 S1P HRO SRC

BOA®

FIT TO GO
FURTHER.™

poron^{xrd} extreme
impact protector



Chicago

#201306 635g



EUR 37 – 47

EN ISO 20345:2011 S1P HRO SRC

BOA® | FIT TO GO FURTHER.™

poron^{xrd} extreme impact protector



Harlem

#201650 720 g



BOA®

**FIT TO GO
FURTHER.™**

poronxrd
extreme
impact
protector



Leeds

#201550 590 g



EUR 37 - 47

EN ISO 20345:2011 S1P HRO SRC

BOA®

FIT TO GO
FURTHER.™

poron^{xrd} extreme
impact
protector



Sheffield

#201579 620 g



EUR 37 – 47

EN ISO 20345:2011 S3 HRO SRC

BOA®

FIT TO GO FURTHER.™

poron^{xrd} extreme impact protection



Mersey

#201613 646g



EUR 39 – 47

EN ISO 20345:2011 S3 HRO WR SRC

BOA®

FIT TO GO FURTHER.™

HDry

poronXrd extreme impact protector



Kasai

#201548 670 g



EUR 39 – 47

EN ISO 20345:2011 S3 HRO WR SRC

BOA®

**FIT TO GO
FURTHER.™**

HDry

poronXrd extreme
impact
protector



K2

#201475 740g



EUR 37 – 47

EN ISO 20345:2011 S3 CI HRO WR SRC

BOA® | FIT TO GO FURTHER.™

HDry®

3M
Thinsulate
INSULATION

poronXrd | extreme impact protector



Gravity-IP

#210102 44g



EUR 01(36-38), 02(39-41), 03(42-44), 04(45-47)

Injection Phylon (IP) and Poron®

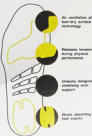
- Air ventilation plus fast-dry surface technology
- Releases tension during physical performance
- Uniquely designed stabilizing arch support
- Shock absorbing heel inserts

Iron Steel®
GRAVITY-IP INSOLE

The Gravity-IP insole comes with an anatomical fit that is built to support the heel, mid- and forefoot while at the same time ensuring shock absorption and grip.

The yellow Poron® Performance material allows the beneficial shock waves caused by strenuous work and activities. Poron® assures performance, greater long-lasting comfort and excellent compression resistance.

The Shock-IP Injection Phylon is a very light and flexible material that provides the combination of extra support and shock absorption plus energy is returned every step.



Hi-vis T-shirt

#400100



XS – 4XL (00 - 07)

EN ISO 20471 Class 1

Very comfortable High-Visibility T-shirt with stretch. The fabric has UV protection, and the main part is in bamboo, which is pleasant to the skin, moisture-wicking and breathable, plus it helps to reduce unpleasant odours.

- Safety-class: EN ISO 20471 Class 1
- Colours: Black / Hi-vis Yellow
- Specifications: 55% Bamboo / 45% Polyester 180g, UV protection
- Reflective material: Two 5 cm reflective stripes around torso, one 5 cm reflective stripe around upper arm, reflective material on both shoulders



Hi-vis Sweatshirt

#400200



XS – 4XL (00 - 07)

EN ISO 20471 Class 1

Thick and solid Sweatshirt which warms on chilly days. The cotton fabric ventilates well and provides high comfort and good insulation whenever needed. It works just as well as an outer garment as an insulating layer.

- Safety-class: EN ISO 20471 Class 1
- Colours: Black / Hi-vis Yellow
- Specifications: 100% Cotton 320g black, 100% Polyester 300g Hi-vis yellow
- Reflective material: Two 5 cm transfer reflective stripes around torso and each arm, reflective material on both shoulders



Hi-vis Paclite Jacket #400300



XS – 4XL (00 - 07)

EN ISO 20471 Class 3

A very light, breathable and pack-friendly shell jacket that provides maximum visibility in combination with protection against wind. Certified as class 3 in all sizes. It works just as well in the workplace as during various outdoor activities.

- Safety-class: EN ISO 20471 Class 3
- Colours: Hi-vis Yellow
- Specifications: 100% Polyester Ribstop, soft fleece inner-collar, YKK front-zip, two front pockets with zippers, one inner pocket with zip, drawstring at hem, ID card D-ring
- Reflective material: Two 6 cm transfer reflective stripes around torso and each arm, reflective material on both shoulders



Technical Wool Socks #21010300



Comfortable and Durable, for Work and Leisure

- Anatomically customized to provide superior fit
- Wool provides unsurpassed protection for the feet
- The natural fibres in the material regulate body temperature
- Composition: 57% wool / 18% polyester / 25% nylon
- Packaging, size and weight: 2-pack / one size / 58 g per pair
- Colours: Black/orange, grey logo



European Standard High Visibility Clothing

Minimum area with visibility materials m²

| | Class 1 | Class 2 | Class 3 |
|----------------------|---------|---------|---------|
| Fluorescent material | 0,14 | 0,50 | 0,80 |
| Reflective material | 0,10 | 0,13 | 0,20 |

X => The number shown next to the graphic symbol indicates the class of the garment according to the table. You will find the certification class printed on the care label inside the product.

EN ISO 20471



EN ISO 20471:2013

- Safety and visibility are important parts of reducing accidents in the workplace. This standard specifies requirements and test methods for visibility clothing. The workwear must be CE-tested and certified by an accredited certification institute.
- The workwear is marked as EN ISO 20471:2013 and the fluorescent and reflective areas are divided into three different classes. The certification class of the garment is based on the area of visible materials and can be either class 1, 2 or 3. The certification class shall be marked within the workwear.
- If the maximum number of washes are not specified in the care instructions, the articles have been tested after five washes. The lifespan of the garment depends on i.e. use, care, and storage. Regular and proper care of the workwear provides best performance.
- The high visibility protective product shall not be covered by any other garment or equipment. And even if a high visibility garment is used, the user will not be visible in all conditions. If the workwear is dirty, its performance will be impaired. Follow the care instructions inside the high visibility workwear to maintain its properties.

European Standards Footwear Classifications



ALUMINIUM TOE CAP



OIL RESISTANT OUTSOLE



LIGHT WEIGHT



COMPOSITE TOE CAP



HEAT RESISTANT OUTSOLE



BREATHABLE MATERIAL



NON-METAL ANTI-PENETRATION



PORON CUSHIONING



WATER RESISTANT UPPER



ANTISTATIC



HEEL ENERGY ABSORPTION



WATERPROOF



ESD



SRC SLIP RESISTANCE RATING



COLD INSULATION

EN ISO 20345:2011

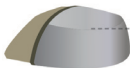
- SB** Basic requirements for safety footwear with a toe cap resistant to an impact of 200 Joules
- S1** As above SB standard, plus Closed seat region, Antistatic properties, Energy absorption of seat region, Fuel resistance
- S2** As above S1 standard, plus Water absorption and desorption, Non-cleated outsole
- S3** As above S2 standard, plus Penetration resistance, Cleated outsole

Additional Safety Features:

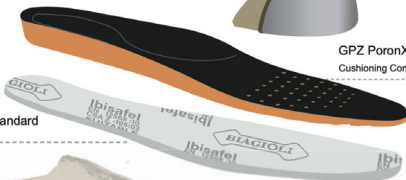
- P** Penetration Resistance offered by a steel or Non-metal midsole: 1100 Newtons
- E** Heel energy absorption: 20 Joules
- A** Antistatic footwear Range 100k to 1000mΩ
- C** Conductive footwear
- HI** Insulation Against Heat
- CI** Insulation Against Cold
- HRO** Resistance to Hot Contact up to 300°C
- WRU** Water Penetration and Absorption Resistant Upper
- WR** Water Repellent Construction

Gravity[®] Sole

EN ISO 20345:2011 standard
Protective toe cap



GPZ PoronXrd[®]
Cushioning Comfort insole



EN ISO 20345:2011 standard
Anti Penetration



Gravity Sole[®]
High rebound compound phylon midsole



Gravity Sole[®]
Nitrile rubber outsole

Gravity[®] Soles provides secure grip

- Various versions and designs depending on function, expected working environment and conditions
- Each sole has included a specially designed energy-absorbing and light weight Phylon midsole that has unique cushioning capabilities
- The midsole sits on top of a specially constructed outer sole with a custom fit design and pattern; tailored to the work environment



poron **Xrd**[™] | extreme
impact
protection

PORON®

PORON Performance Material is a dual action solution to help alleviate the amount of damaging shockwaves caused by strenuous activities. By providing the right amount of shock absorption with resiliency, you are comforted during each step.

Superior Shock Absorption

Testing shows repeated lower Peak Deceleration, thus greater shock reduction, with PORON Performance Material than other common insole materials. Gain better shock absorbency in a thinner, lighter material.

Maintains Performance

Long-term comfort and excellent compression-set resistance that will not break down with repeated use.

Open-cell, breathable technology

Standard offering of Poron Performance with Microban® antimicrobial technologies and odour control solutions.

Gravity-IP

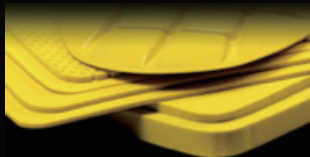
Anatomically designed insole with a supportive arch included PoronXrd and Poron areas provide both cushioning and energy absorption.

Absorbs up to 90% of energy at high speed impacts



Standard Eva Form

Poron® XRD



BOA®

DIALED IN.™

TURN TO ADJUST + QUICK RELEASE



PUSH IN TO ENGAGE



TURN TO TIGHTEN



TURN TO LOOSEN



PULL UP FOR QUICK RELEASE

Boa® Dial



Cushioned
overmold

Tactile
premold

Boa® Lace



Nylon
coating

7x7 bundles of
stainless steel

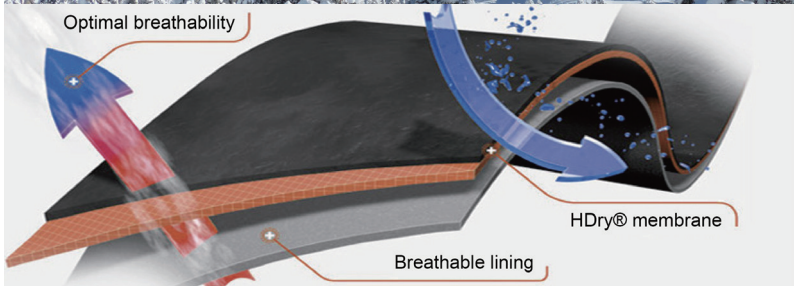
HOW IT WORKS

The BOA® Fit System features three user interfaces, purpose-built to optimize the fit experience. With instant, single-handed fine tuning as precise as 1mm, you can easily adjust for comfort or a more targeted performance without ever losing focus. And once dialed in, The Boa® Fit System stays that way. At the mountain, on the course, or on the job, Boa® gives you a secure fit that makes it easy to get your footwear on and off quickly no matter the conditions.

The logo features the letters 'H' and 'D' in black, and 'ry' in red, all in a bold, sans-serif font. A blue horizontal line is positioned below the letters.

HDry

Optimal breathability



HDry® membrane

Breathable lining

The new highest Standard in Waterproof/Breathable Technology

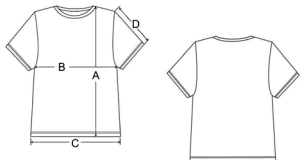


A - Shell
B - Membrane
C - Sweat

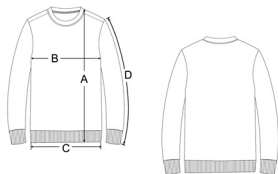
HDry® uses a one-piece patented construction process that creates a waterproof breathable barrier. This impenetrable layer is heat-bonded directly to the outer fabric, leaving no seams, no gaps, and no way for water to get in. Compare that to traditional waterproof technology. Water gets in and stays in, collecting in the space between the inner and outer layers, making them heavy and wet. HDry® is the new waterproof and breathable standard providing the highest performance, best fit, precision, and the cleanest design and construction.

Size Charts - Unisex

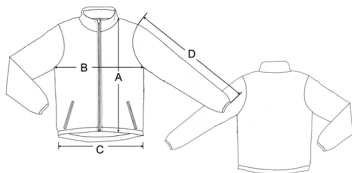
Workwear:



| T-SHIRT | XS | S | M | L | XL | 2XL | 3XL | 4XL |
|------------------|----|----|------|------|----|-----|------|------|
| A) Body length | 65 | 67 | 70 | 72 | 75 | 78 | 81 | 84 |
| B) 1/2 Chest | 43 | 47 | 51 | 55 | 59 | 63 | 67 | 71 |
| C) 1/2 Bottom | 43 | 47 | 51 | 55 | 59 | 63 | 67 | 71 |
| D) Sleeve length | 21 | 21 | 21.5 | 21.5 | 22 | 22 | 22.5 | 22.5 |



| SWEATSHIRT | XS | S | M | L | XL | 2XL | 3XL | 4XL |
|------------------|----|------|----|------|----|------|-----|------|
| A) Body length | 68 | 70 | 72 | 74 | 76 | 78 | 80 | 82 |
| B) 1/2 Chest | 47 | 51 | 55 | 58 | 62 | 66 | 70 | 74 |
| C) 1/2 Bottom | 42 | 45 | 48 | 52 | 56 | 59 | 62 | 65 |
| D) Sleeve length | 59 | 60.5 | 62 | 63.5 | 65 | 66.5 | 67 | 67.5 |



| JACKET | XS | S | M | L | XL | 2XL | 3XL | 4XL |
|------------------|------|------|------|------|------|------|------|------|
| A) Front length | 64.5 | 67 | 70.5 | 72 | 73.5 | 75 | 76.5 | 78.5 |
| B) 1/2 Chest | 49.5 | 52.5 | 55.5 | 58.5 | 61.5 | 64.5 | 67.5 | 70.5 |
| C) 1/2 Bottom | 49 | 52 | 55 | 58 | 61 | 64 | 67 | 70 |
| D) Sleeve length | 66 | 67 | 69 | 70 | 71 | 72 | 73 | 74 |

Footwear:

| DESCRIPTION | SIZE / MEASUREMENT (mm) | | | | | | | | | | | |
|-----------------------------------|-------------------------|-----|-----|-----|-----|-----|-----|-----|-----|-----|-----|-----|
| EUR size | 36 | 37 | 38 | 39 | 40 | 41 | 42 | 43 | 44 | 45 | 46 | 47 |
| Insole-length Aluminium Toecap | 231 | 239 | 248 | 256 | 265 | 273 | 281 | 290 | 298 | 307 | 315 | 324 |
| Insole-length Composite Toecap | 233 | 241 | 249 | 257 | 265 | 273 | 281 | 289 | 297 | 305 | 313 | 321 |

**Iron
Steel**[®]
SCANDINAVIA



Ironsteel Scandinavia AS

Org. no. NO-924 487 437

www.ironsteel.no

post@ironsteel.no

www.ironsteelscandinavia.com

post@ironsteelscandinavia.com